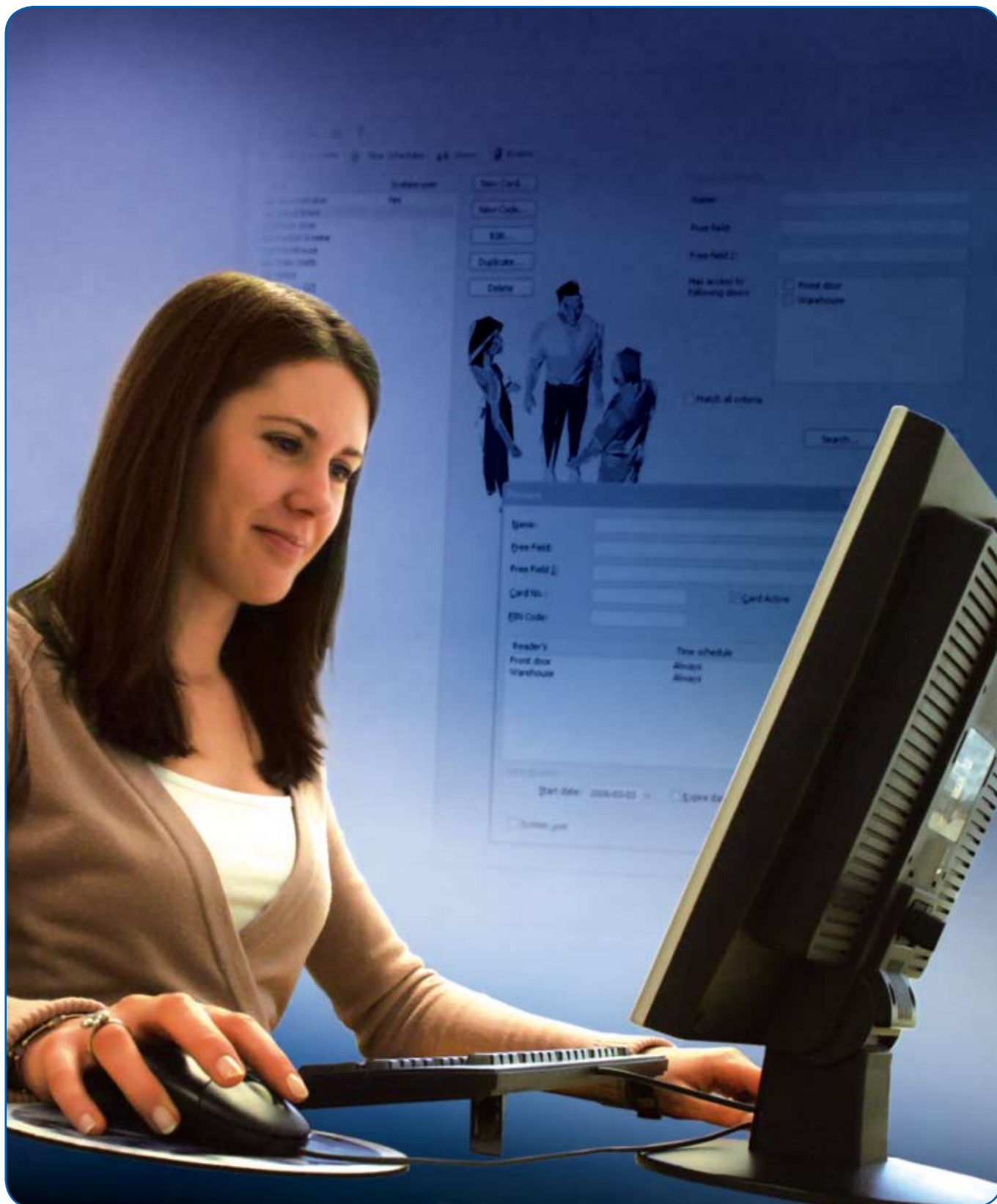




Bewator Entro Lite

Uniclass L7626	EPIC M231
CI/SfB (64.11)	X

The user friendly upgradeable
access control system



The user friendly upgradeable access control system

Bewator Entro Lite access system is a cost efficient solution for those who only have a few doors to control, but who still want to feel safe with a high level of security and want the ability to easily upgrade their security solution.

The user friendly upgradeable access control system

Entro Lite is ideally suited to the small business user where only a small number of doors need to be secured. The system can be used standalone, networked up to eight Readers programmed by the Entro Lite software or upgraded to the powerful Entro 5 system without ANY hardware redundancy. With Entro Lite you are always in control of who has access, even if someone loses their card or terminates their employment.

Ease of use

Entro Lite is an access control system that has been developed with focus on the end user. Programming and administration can be done simple via a keypad in standalone mode or via the Window based Entro Lite software. Adding new cards, setting access levels or blocking lost cards is quickly and easily achieved.

Customise your security

By creating time schedules and security levels it is easy to adapt Entro Lite to the various security demands for of a busy and changing business. Time schedules can be used to control when different people are to be allowed access through different doors. Security levels decide what is action is required to access a door, for example card only or a combination of card with a personal pin-code. With Bewator Entro Lite you have the possibility to customise your security to suit your needs.

System reporting

When a system is used with the Entro Lite software you are able review all the events occurring in the system, for example valid entry, forced entry attempts or any communication disturbances. All events are logged which enable you to take any require actions. In addition filters and search functions facilitate the handling of these events.



Advantages of using Bewator Entro Lite software

- Central control of up to eight doors. The system can handle any type of door - such as entry doors, inner doors, doors to a storage room or warehouse, garage doors etc.
- The Window based software makes programming and administration of cards and tags simple and efficient.
- All the programming is done via the PC, which makes it simple to adjust any security requirements for a particular building at anytime of the day.
- Filters and search function allow you to control the way system events are handled.
- It is easy to make printouts of events and programmed information from the PC or to back-up any information.
- At any time you can easily upgrade to the Entro 5 access control system without ANY hardware redundancy and utilise the additional advanced functions that Entro 5 supports e.g. 512 doors and 20,000 cardholders.

The Entro Lite access control system can be installed with one door to start with and then be expanded with additional doors when needed. The possibility of adding more doors as and when required makes the system flexible and cost efficient, as there is no equipment redundancy.

At the same time Entro Lite has many useful features and is as user friendly as the larger access control system, Bewator Entro 5, even with just one door installed.

From 1 door

Entro Lite can be used as a single door standalone access control solution with a maximum of two Readers per controller, for entry and exit purposes. All entries and exits are registered in the Reader.

The programming can either be carried out from a connected PC using the Entro Lite software, or via the internal keypad with no need for shadow cards, making system set up simple and quick. Entro Lite is installed in a split configuration with the DC800 Door Controller mounted in an internal protected environment whilst the actual Reader is mounted separately, thus producing a more secure system. It is also possible to connect two Readers for both entry and exit (BCLINK Only).



Entro Lite as a stand-alone system can be programmed from the door controller DC800.

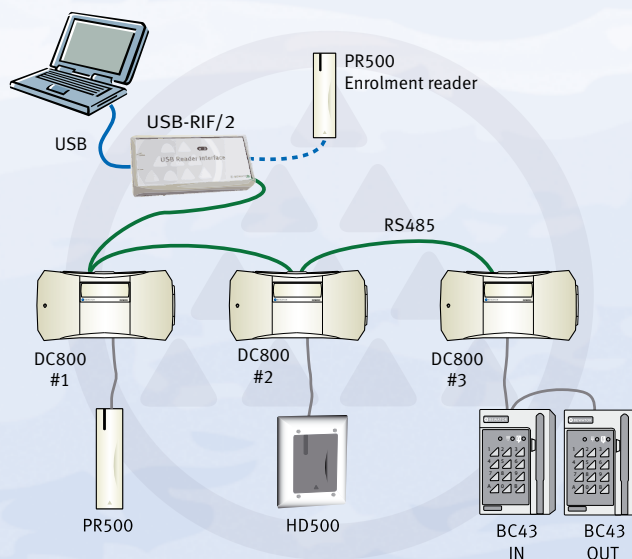
To a small networked system

A standalone Entro Lite Controller can be easily up-graded to a small networked system with a maximum of eight doors by simply moving up a jumper, giving PC control via a RS485/USB Interface. When the DC800 is used as a component in a small system, the programming is done from a connected PC using the Entro Lite software.

Entro Lite can utilise the full range of Bewator Readers, including the Bewator's patented Hands-Free technology and AVI loop, also any third party clock & data or 26 and 34 bit Wiegand Readers.

To a fully featured Entro 5 system

A further upgrade to a full Entro 5 system can be achieved by inserting a segment controller into the system, the cardholder database can then be imported from the Entro Lite system to the fully featured Entro 5 system without ANY equipment redundancy. The advanced access control system Bewator Entro is better suited to larger and/or expanding businesses. Bewator Entro can handle up to 512 doors and 20 000 cards. The system includes all the functions you would expect in a modern access control system, e.g. reservation function, antipassback, lift- and alarm control. The multifunctional and flexible Bewator Entro system is a system you can continue to grow with.



Entro Lite installation suggestions

Entro Lite suits apartment buildings where there is a need to get away from the problems of lost keys and pin-codes circulating as well as giving the tenants easy and secure access to the building.

Companies with good access control can choose Entro Lite for their front door. With Entro Lite it is easy to give time-limited access to temporary staff or to make any other adjustments.

Entro Lite can help a small workshop, where the staff does not have the time to control customer entry. With Entro Lite this door can be time-controlled so that it may be open during office hours and locked at all other times including the lunch hour.



The user friendly upgradeable access control system

Bewator Entro Lite Key Components

Entro Lite software and RS485 to USB Interface

When using Entro Lite software the system is administered via a PC. This is done via a bus cable connected to the computer's USB-port via a RS485 to USB Interface, the USB-RIF/2.

The PC does not have to be permanently connected to the system, but can be connected when you need to make changes in the system.

Door Environment

DC800 Door Controller is mounted in an internal protected environment whilst the actual Reader is mounted separately, thus producing a more secure system and can utilise any of the suite of Bewator Readers.

Bewator Entro Lite Features

- Can be installed standalone
- Networked and controlled by a PC (max 8 doors)
- Can be upgraded to the secure and flexible Entro 5 system, without ANY hardware redundancy
- 1000 cards/persons
- 1000 events in the buffer
- 10 time schedules
- Built in seasonal clock
- Antipassback
- Reader interface: BC-Link, Clock & Data, Wiegand
- Communication interface: USB as well as RS485
- Supports Windows XP as well as 2000
- The software is delivered on a CD-ROM



USB-RIF/2 with reader (PR500) is a useful tool when logging in to the software, doing a quick search and for enrolment reading.

Bewator Entro Lite installed and supported by:
Axxess 28 Ltd
Tel 0845 680 0228
Fax 0845 680 0229
Email: sales@axxess28.com
www.axxess28.com

 **BEWATOR**
A Siemens Business

Bewator Ltd • Brecon House, Llantarnam Park, Cwmbran, NP44 3AB
Tel: 0871 386 0800 (Switchboard) • Fax: 0871 386 0888
www.bewator.co.uk • E-mail: sales@bewator.co.uk

