

PAC[®] SecureNet[™]

Integrated Access Control Solution



A complete sense of satisfaction

with everything from Stanley Security Products... whatever your business.

STANLEY
Security Products

Stanley Security Products, a sales division of global security and communications specialist, Stanley Security Solutions, offers an extensive range of products specifically selected for selling through resellers and installers. Drawing on Stanley's worldwide network of dealer and distributor contacts, and the strength and reputation of its global brand, we are able to offer resellers and installers the highest level of product quality, customer service and technical support.



Our product portfolio includes the renowned PAC® brand of versatile access control solutions. Whether our customers require a single door installation or a fully integrated global web-based system, there is a PAC product to suit every application and budget.

Designed around the practical needs of dealers, installers and end-users, PAC Oneplatform™ technology embraces a complete portfolio of products including readers, controllers and software, all of which can be fully integrated with CCTV, Time and Attendance, Intruder and Staff Protection systems.

Support



By choosing Stanley as your partner you have a wealth of support services open to you.

Technical Support

Our technical support teams are highly skilled in answering any questions you have in relation to our products. We have specialist skills in communication and IT related areas and are able to provide supporting documentation in a range of languages.

Systems Design Support

Many of our customers need assistance with putting together a system or design or meeting a customer specification. We have staff that are fully trained in system design and producing specifications and drawings that help architects, systems specifiers, design consultants and installers.

On-line Web Support

Our website has an extensive library of technical papers, FAQ's and installation guides available to download. Some information requires a login and password. We are committed to providing more information on line as we know our customers prefer the flexibility that the website provides - available 24/7.

Marketing Support

We have an extensive range of sales literature in various languages to help with sales development and can also assist with local advertising, exhibitions and marketing campaigns.

Customer Service

The Customer Services Team are committed to providing a first class service. We understand how important it is to handle your day to day requirements with speed and efficiency. Please do not hesitate to contact Customer Services on +44 (0) 161 406 3400 if there is anything we can do to help you.

Order Tracking

Order tracking takes the highest priority as we understand that once an order is placed our customers need to get installation moving very quickly. Our order system links directly in to manufacturing allowing us to track orders through to delivery. We will keep you informed of orders and our aim is to meet your delivery requirements each and every time.

Introduction

The PAC® SecureNet™ Oneplatform software sets a new industry standard for performance, reliability and flexibility, and can be tailored to meet the access control and security needs of your organization regardless of its size. As your business security requirements evolve, PAC responds by delivering industry leading solutions targeted at meeting today's business requirements. It manages access into and around facilities by controlling access to doors, while providing high security through advanced alarm management and ensuring scalability as systems grow.

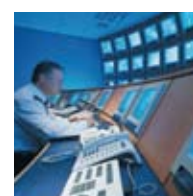
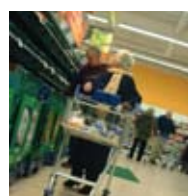
PAC SecureNet is designed for use with the powerful new PAC 500 series of controllers. However, the system has been designed so that our valued customers can interface PAC SecureNet with our legacy PAC 2100/2200 controllers as well.

It's an advanced and simple to administer solution designed to provide optimum performance today and in the future. An open architecture design based on Microsoft's .NET and CE.NET platforms allows administrators to integrate increasingly sophisticated capabilities as needs change and grow, extending the product life cycle and providing the best return on a company's investment.

Easily configured to operate on a standalone PC or across a corporate network, SecureNet displays detailed real time information of events including alarms as they occur across a facility, as well as offering alarm monitoring, digital video, intrusion detection and ID production. One single, seamlessly integrated solution provides unprecedented ease of management with centralised system-wide access, administration and maintenance that results in greater time and cost efficiencies, while increasing both facility and staff security.

Key Features

- Based on Microsoft .NET™ technology that is secure and has easy set up and requires minimal training
- Supports Microsoft Windows® – Windows Vista Ultimate, Business and Enterprise, Windows XP Professional (SP2), and Windows Server 2003 (SP1)
- Database support for Microsoft SQL Express, Microsoft SQL 2000 (SP4), Microsoft SQL Server 2005
- Up to 75,000 Keyholders/Cardholders
- Up to 1,000 doors
- Support for up to 15 PC clients
- Up to 8 concurrent alarm workstations
- 5,000 access groups
- 200 time profiles with 4,000 periods
- 200 holiday time profiles
- Up to 100 password protected operators
- Multi-language support
- Individual door access times (DDA requirement)
- Evacuation and muster reports
- Audit trail
- Secure communications (SSL) with PAC 500 over Ethernet
- Photo ID badge creator and printing support
- Graphical map support
- Lift control
- Event-to-action
- Area manager
- Import/export facility
- User configurable Crystal™ reports, with the ability to save and share reports between operators
- Event archiving
- Axis Internet Protocol (IP) camera infrastructure support
- Dedicated micros (DVR) support (Sprite 2)
- Magstripe card encoding
- Supports up to 4 RS-232/RS-485 channels
- Comprehensive online help system
- Legacy Support - PAC 2100/2200 controllers
- Free technical support from PAC to help with any installation or operational questions.





PAC® SecureNet™

PC Administration Software Features	PAC SecureNet Part No. 21767	PAC SecureNet SE Part No.13400	PAC SecureNet Pro Part No. 13401	
Area Management (incl. Area Mode Profiles)	•	✓	✓	
Alarm Management	•	✓	✓	
Audit Trail	•	✓	✓	
Badge Designer	✓	✓	✓	
CCTV Integration (IP cameras only)	•	✓	✓	
DVR Integration	•	•	✓	
Door Mode Profiles	✓	✓	✓	
Lift Control	•	✓	✓	
Event Archiving	•	✓	✓	
Event to Action	•	✓	✓	
Evacuation and Muster	•	✓	✓	
Reader Mode Profiles	✓	✓	✓	
PAC 2100/2200 Support	•	•	•	
Easikey 1000 Support	•	•	•	
Doors	20	100	1000	
Keyholders/Cardholders	1,000	10,000	75,000	
Operators	10	10	50	
Time/Mode Profiles (4000 periods across all profiles)	20	100	200	
Holiday Profiles (20 periods each)	2	10	10	
Access Groups	20	2,000	5,000	
PAC 500 Controllers	✓	✓	✓	
PAC 512 Controllers	✓	✓	✓	
PAC 520 Controllers	•	✓	✓	
PAC 530 Controllers	•	✓	✓	
500 Channels	0	100	100	
Direct Channels	50	50	50	
Dial-up Channels	2	2	10	
TCP/IP Channels	Unlimited	Unlimited	Unlimited	
Off-line Channels	Unlimited	Unlimited	Unlimited	
Number of PC's (client)	1	2	5	
Number of Alarm Workstations	•	1	2	
Organisational Units	1	5	10	
Upgrades				Part Number
5,000 Keyholder License add-on	<=75,000	<=75,000	75,000 as standard	13086
10 x Additional Doors	<=1,000	<=1,000	1,000 as standard	13109
50 x Additional Doors	<=1,000	<=1,000	1,000 as standard	13095
500 x Access Groups	<=5,000	<=5,000	5,000 as standard	13402
10 x 500 Channel add-on	<=100	100 as standard	100 as standard	13403
10 x 2100/2200 Controller	<=250	<=250	<=250	13404
10 Operator License add-on	<=100	<=100	<=100	13114
10 Dialup Channel License add-on	<=250	<=250	<=250	13971
50 Dialup Channel License add-on	<=250	<=250	<=250	13972
1 Concurrent PC License add-on	<=15	<=15	<=15	13091
1 Concurrent Alarm Workstation License add-on	<=8	<=8	<=8	13090
1 Remote Communications Server	<=4	<=4	<=4	13405
1 Organisational Unit	<=25	<=25	<=25	13413
Individual Module Add-ons				Part Number
EK 1000 Controller	•	•	•	13406
Alarm Manager	•	✓	✓	13115
Area Manager	•	✓	✓	13116
Audit Trail	•	✓	✓	13407
Badge Designer	✓	✓	✓	13408
CCTV Integration (IP cameras)	•	✓	✓	13409
DVR Integration	•	•	✓	13117
Event to Action Manager	•	✓	✓	13410
Lift/Elevator Control	•	✓	✓	13119
Event Archiving	•	✓	✓	13411
Mustering and Evacuation	•	•	✓	13412
OEM Interface	•	•	•	41039

Key:
 ✓ - Included as standard
 • - Optional via Upgrade



Stanley Security Products
PAC Access Control
1 Park Gate Close
Bredbury
Stockport
Cheshire SK6 2SZ

Tel: +44 (0) 161 406 3400
 Fax: +44 (0) 161 406 8984
 Email: info@stanleysecurityproducts.com
www.stanleysecurityproducts.com

PAC SecureNet installed and maintained by:
 Axxess 28 Ltd
 Tel 0845 680 0228
 Fax 0845 680 0229
 Email: sales@axxess28.com
www.axxess28.com

Stanley Security Products is a sales channel of Stanley Security Solutions

Stanley Security Solutions - Europe Ltd
 Registered in England and Wales No. 875534
 Registered Office: Stanley House, Bramble Road,
 Swindon, Wiltshire SN2 8ER.

All reasonable care has been taken to ensure that the information contained in this publication is accurate as at the date of printing. Such information is nevertheless liable to variation in the event of changes occurring subsequent to the date of printing in the products, services or statements referred to in this publication.

Windows® is a registered trademark of the Microsoft Corporation in the United States and other countries.

