

Access Control



CCTV Systems



Intruder Alarms



DDA Systems



Barriers



Biometrics



ID Card Systems



CCTV Systems from Axxess 28 Limited



Axxess 28 Limited

Unit 18 The Rosemary Centre, Blackwater, Camberley, Surrey, GU17 0LS

Telephone: 0845 680 0228 Facsimile: 0845 680 0229

Email: sales@axxess28.com Internet: www.axxess28.com

Registered in England No. 2640434

Access Control



CCTV Systems



Intruder Alarms



DDA Systems



Barriers



Biometrics



ID Card Systems



High Resolution IP Network CCTV Cameras



Mobotix 3.0 mega-pixel IP cameras
Registered Mobotix Partner



IQEye 1.3, 3.0 and 5.0 Mega-Pixel IP cameras



Axis mega-pixel IP Network Cameras



PoE
(Power Over Ethernet)
Most IP cameras we install support PoE, where the camera is powered via the network switch to reduce installation costs



Arecont mega-pixel IP cameras

IP Network CCTV Recording Systems

Commercial and Industrial Security Systems and Solutions

Access Control



CCTV Systems



Intruder Alarms



DDA Systems



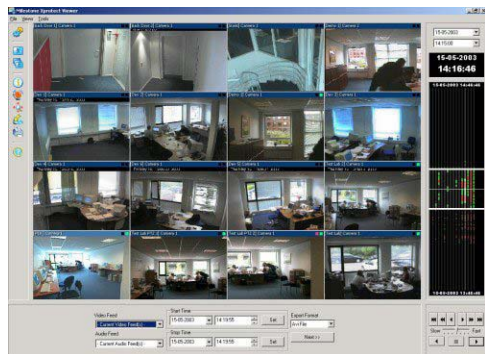
Barriers



Biometrics



ID Card Systems



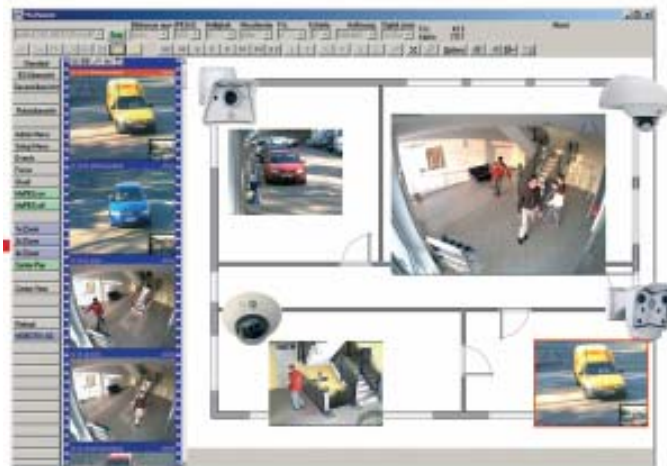
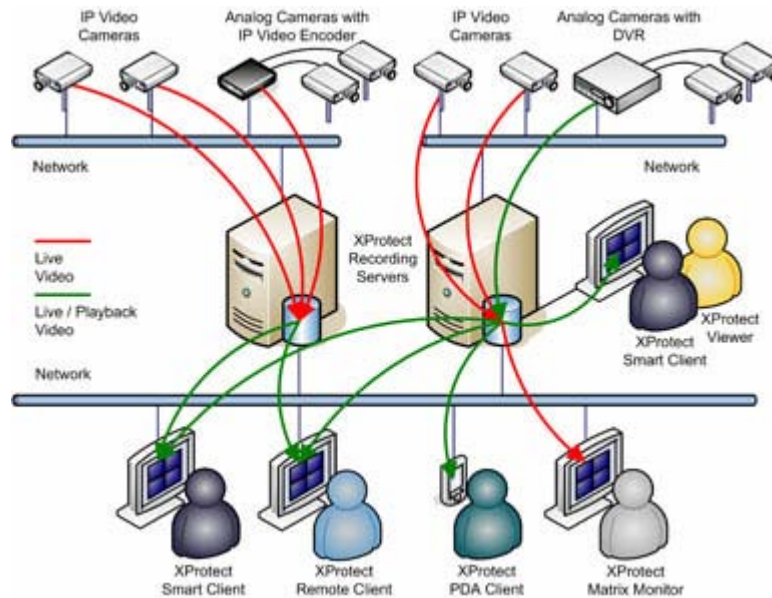
Milestone XProtect Professional IP recording software



JVC NVR with Milestone embedded inside (Network Video Recorder)



Artec MultiEye Enterprise 32 camera NVR (Network Video Recorder)



Mobotix CC Control Centre IP recording software

Hybrid Analogue and IP Network CCTV Systems

Hybrid systems are a mix of analogue CCTV and IP CCTV cameras and recording

Commercial and Industrial Security Systems and Solutions

Access Control



CCTV Systems



Intruder Alarms



DDA Systems



Barriers



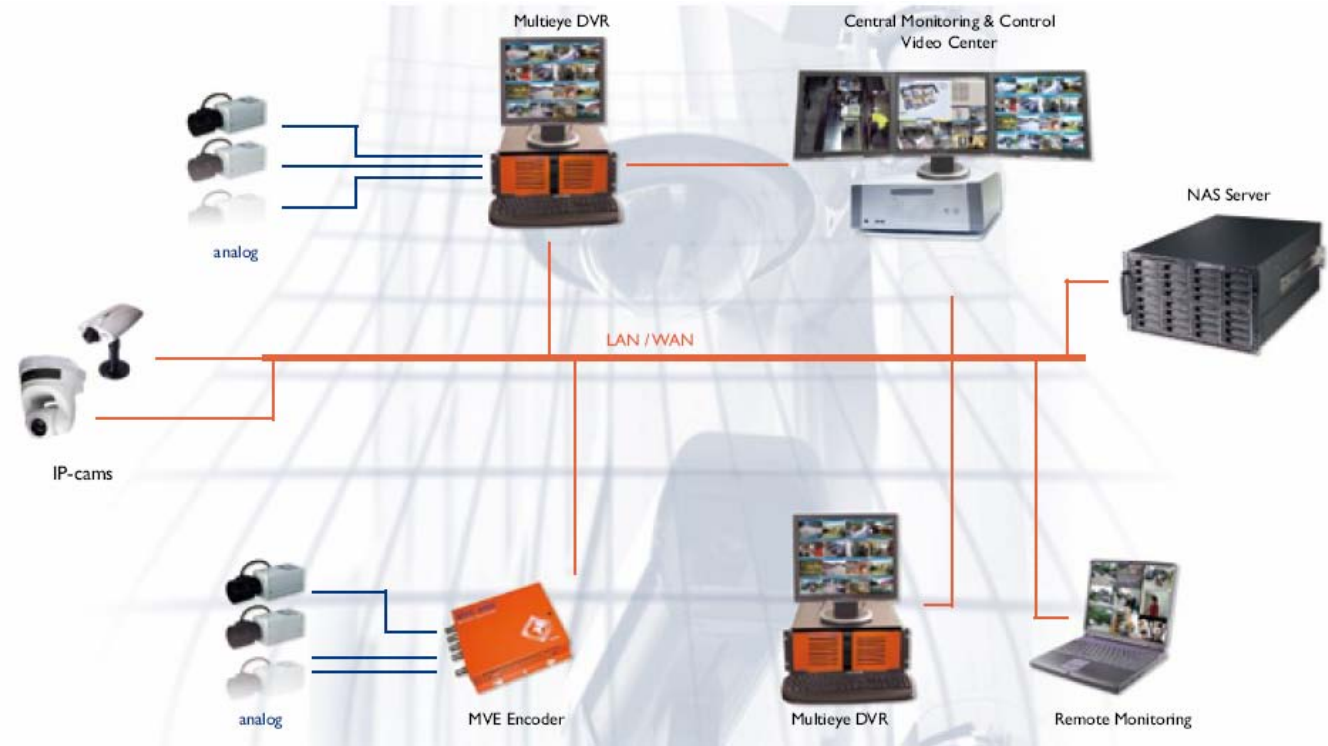
Biometrics



ID Card Systems



Artec MultiEye Enterprise 32 camera Hybrid DVR



Honeywell Fusion III DVR



JVC NVR supports analogue and IP cameras



Axis 240Q video server

Access Control



CCTV Systems



Intruder Alarms



DDA Systems



Barriers



Biometrics



ID Card Systems



Analogue CCTV Systems



Number Plate Reader Camera (NPR)



PTZ Dome and 360degree cameras



Bullet IR camera on a barrier pedestal



Static Dome camera



Dedicated Micros DS2 16 camera DVR



Mitsubishi 4, 9 and 16 camera DVRs



Artec MultiEye business 8, 16, 24 and 32 camera DVR

Access Control



CCTV Systems



Intruder Alarms



DDA Systems



Barriers



Biometrics



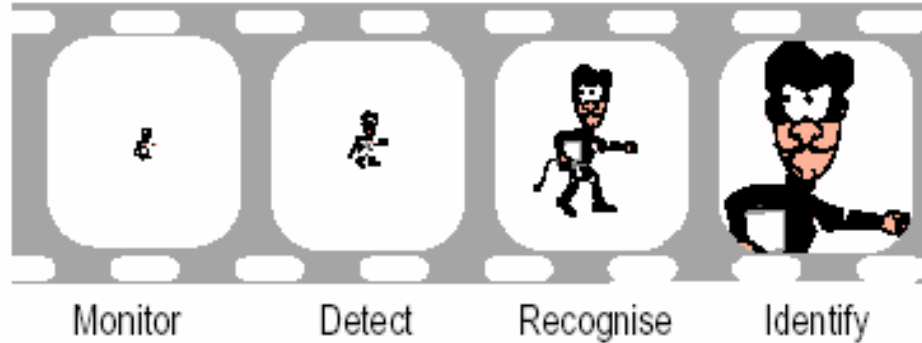
ID Card Systems



Image Quality

It is essential that when a system is established then the image quality offered must be good enough for the purpose intended. If the system is installed to prevent and detect crime then the system must reflect that and offer an output quality that can identify an offender or the scene of the crime.

Decide if the camera output is intended to monitor, detect, recognise or identify an intruder, this can be expressed as the proportion of the target to be viewed (%).



Comment	Quality	Lines	Notice	Detect	Recognise	Identify
Typical recording quality for analogue cameras	CIF	288	13%	26%	130%	312%
Highest quality analogue camera	PAL	576	5%	10%	50%	120%
1.3 Mega-pixel IP camera	MEGA	960	3%	7%	33%	78%
3.0 Mega-Pixel IP camera	QXGA	1536	2%	4%	20%	48%

Note: Based on a person 1.6m tall

Access Control



CCTV Systems



Intruder Alarms



DDA Systems



Barriers



Biometrics



ID Card Systems



IP Mega-Pixel Recording Resolution

IP CCTV recording systems that Axxess 28 install will support as standard mega-pixel IP cameras recoding images of up to 6 mega-pixel which is over 10 times the resolution of a traditional analogue CCTV camera.

To a decisive degree, the image quality of live images and recordings determines the information content and, correspondingly, the quality of the video surveillance system. According to the nature of the task – recognition or non-ambiguous identification - the image area of every video surveillance camera must be selected corresponding to the available resolution to measure up to the demands.

Better Coverage

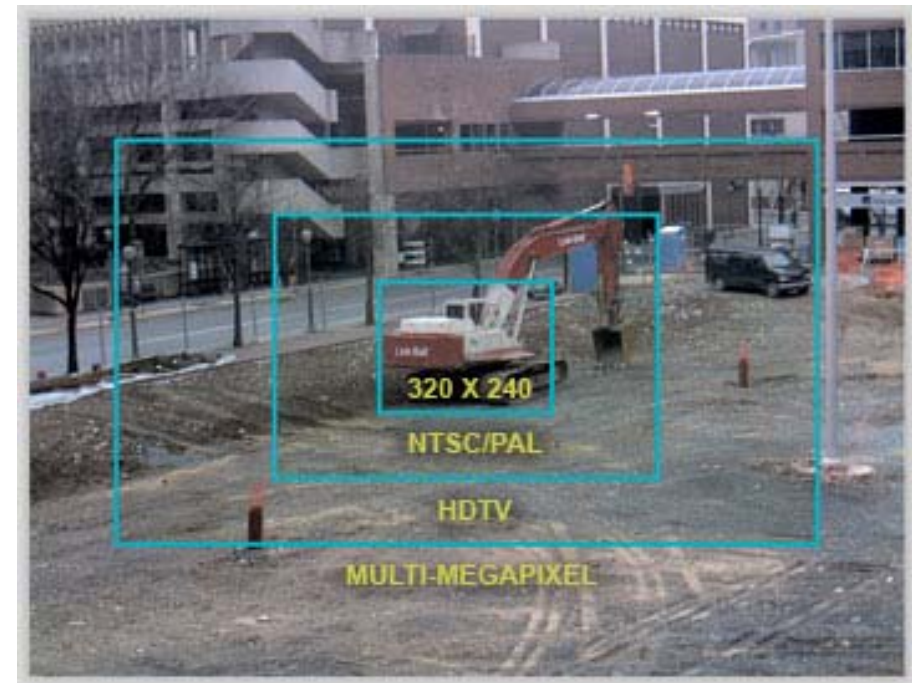
Mega-pixel IP Video images provide better camera coverage, better picture detail and an overall superior IP video experience. Save money on installation, service and support by using a single Multi-Megapixel IP camera to replace multiple fixed cameras or a mechanical Pan, Tilt and Zoom camera.

Better Recording

See crisp clear images on recorded video, not blocky, blurry images. IP cameras high resolution lets you record and playback crisp, clear images with the MultiEye DVR and capture all the details.

Better Viewing Experience

Replacing several cameras with a single Multi-Megapixel IP camera improves the live and recorded viewing experience by eliminating the need for multiple monitors or complex, thumbnail multi-view screens.



Access Control



CCTV Systems



Intruder Alarms



DDA Systems



Barriers



Biometrics



ID Card Systems



4CIF Analogue Recording Resolution

The digital video recorders DVRs we install are capable of recording at 25fps per camera at 4CIF resolution from existing analogue cameras and also support IP mega-pixel cameras.

Obviously DVR and project cost is a big consideration, but typically entry level or budget DVR's available that offer 20fps per camera do this at the cost of video image size and can typically only offer CIF 352 x 288 resolution, which will give disappointing results and may not be fit for purpose.

The DVR units we install are of very high quality and will record using MPEG4 video encoding at 25 fps per camera at 4CIF 704 x 576 which is basically near to DVD quality recording of your video images and the video playback will be as good as your CCTV operators will see on the monitors.



To get the best quality images for evidence purposes from analogue cameras you will need 25fps (frames per second), which is basically real time recording per camera channel and at 4CIF 704 x 576 resolution.

Access Control



CCTV Systems



Intruder Alarms



DDA Systems



Barriers



Biometrics



ID Card Systems



Ultra-High Resolution Wide Angle Surveillance



SentryScope is a 21 million-pixel ultra high resolution digital surveillance system with a 90° angle of view, it can provide facial identification in an area 90m wide and 60m away from the camera even in playback.



Applications:

Stadium and Event Management Safety
Public events and concerts Management Safety
Car parks
High Streets and Town Centres and Shopping Centres
Bus and Train Stations, Airports and Seaports
Warehouse and distribution centres and Business parks

Benefits:

- Positive Identification in Very Wide Areas
- Provides facial identification in an area 90m wide and 60m deep and number plate identification at half these distances, even in playback!
- Unmanned Operation, records the complete field of view in the finest detail all the time, even if someone is zoomed into one area.

Access Control



CCTV Systems



Intruder Alarms



DDA Systems



Barriers



Biometrics



ID Card Systems



Covert Cameras



Ceiling speaker



Fire Bell



Smoke Detector



Fire Exit Sign



PIR



Data Wall Port

Access Control



CCTV Systems



Intruder Alarms



DDA Systems



Barriers



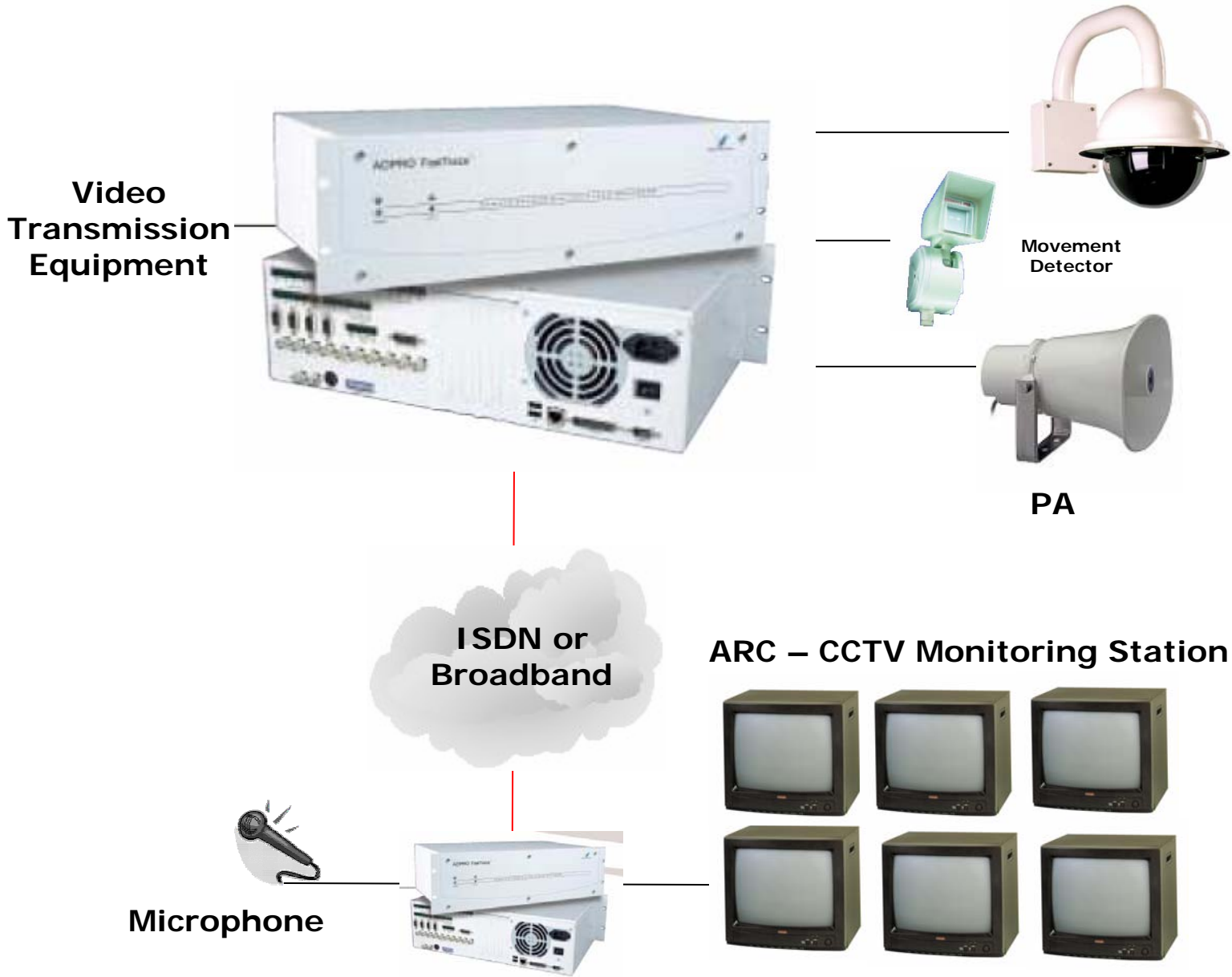
Biometrics



ID Card Systems



Remote Video Surveillance



UTP Analogue Video Transmission

Commercial and Industrial Security Systems and Solutions

Access Control



CCTV Systems



Intruder Alarms



DDA Systems



Barriers



Biometrics



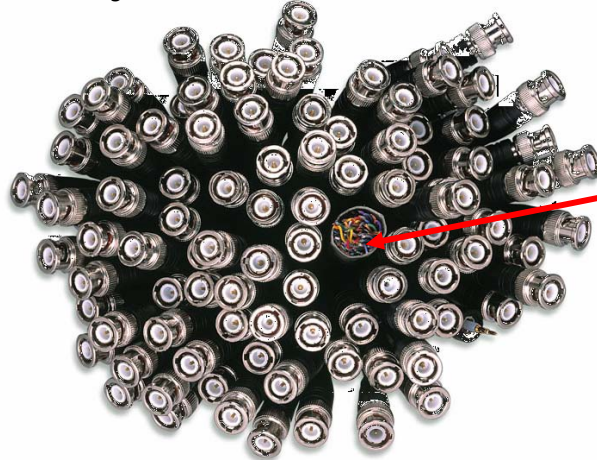
ID Card Systems



Axxess 28 use unshielded twisted pair (UTP) cable throughout an analogue CCTV system with high quality video balun devices at each camera and the control room to enable high quality images at the DVR position.

On large sites Axxess 28 normally recommend and install a single UTP (unshielded twisted pair) backbone cable (basically a telephone cable) around the site that is capable of supporting up to 100 cameras or alarm or monitoring devices.

Once the backbone cable is in place you have built in expandability and flexibility to install cameras where you like without the hassle and expense of running a cable all the way back to the DVR.



This picture shows the amount of cabling and space required for 100 CCTV coaxial cables together with a 100pair UTP cable which can support 100 cameras!

Additional cameras are simply connected to the nearest backbone cable DP (distribution point), so a new or a re-located camera could be up and running in hours.

Benefits of using UTP for CCTV video transmission compared with coax cable:

	Surge Protection	Noise immunity	Video signal loss	Ground loop isolation	Max distance
Coax	NO	NO	YES	NO	300m
NVT UTP	YES	YES	NO	YES	1500m

Video transmission over UTP removes any electrical noise or "humbars" (black areas) rolling down the screen and this is normally down different mains phases for equipment or earth loop problems.

Data Protection Act Products

Commercial and Industrial Security Systems and Solutions

Access Control



CCTV Systems



Intruder Alarms



DDA Systems



Barriers



Biometrics



ID Card Systems



Logbooks and Archive DVD's



Evidence bags



Lockable equipment cabinets



CCTV Warning Signs

CCTV Systems from Axxess 28 Limited

Commercial and Industrial Security Systems and Solutions

Access Control



CCTV Systems



Intruder Alarms



DDA Systems



Barriers



Biometrics



ID Card Systems



- ✓ We provide a system that will be system will be designed, installed and supported by specialists.
- ✓ Our project and support costs offer the best value for money for the whole life costs of the systems, where you can be assured of getting high quality equipment together with a high quality installation and after sales support and we will be around in 10 years and more still supporting your systems.
- ✓ We provide a system that will work effectively for its design life - reducing the total cost to you and inconvenience to your staff from poorly designed or low cost, low value equipment. (Subject to annual maintenance)
- ✓ We can assure you that we will meet todays and future requirements regarding installation and support together with competitive pricing.
- ✓ Due to the modular nature of our installation your equipment would be constantly monitored in order that we are able to offer you suggestions how to keep your systems up to date.

Please contact us:

Telephone 0845 680 0228

sales@axxess28.com